

June 7, 2009

**FOR IMMEDIATE RELEASE**

Contact Information

Amy Galpin, Gallery Coordinator

Phone: (312) 738-0400 Email: gallery@womanmade.org

womanMADE

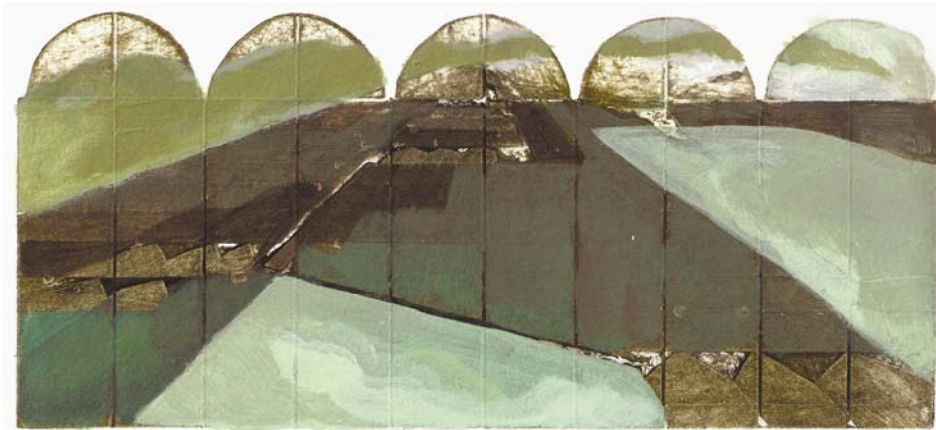


GALLERY

# Sage Dawson's *Maps & Metaphysics*

Landscapes of History, Space, Myth and Scripture

Opening Reception: Fri., June 19, 6-9 p.m.



Sage Dawson

*Dome Study for Itinerary Map West Through Space & Time*  
acrylic on collograph; 4.5 x 10 inches

CHICAGO - Woman Made Gallery is proud to introduce Sage Dawson and her mixed media artworks in her solo exhibition, *Maps & Metaphysics*. Dawson was awarded first prize in the *One Planet, One Experiment* group show at Woman Made Gallery in fall 2008.

**About the Exhibition:**

Historically, maps have been used as tools to represent space: to make large things smaller or abstract things more concrete, as well as to consult for travel. Maps document not only literal representations of land—the distinct identities of spaces, imperialistic expressions of power, and scientific understanding, but also abstract organizational systems, historical development models, states of mind, and world views. They may be, in a sense, the largest portraits of communities that we have.

To this rich history, Sage Dawson is contributing her maps. Familiar imagery and architectural references encourage viewers to imaginatively inhabit the landscape. Sage suggests that history, the production of space, and human experience influence the formation of individual and communal systems of belief, and thus responses to existence in general. Her maps recall and invent such influences, re-evaluation the archaic notion of sublimity, and explore map-making beyond the physical world and into a more epic landscape of history, space, myth and scripture.

-more-

**About the Artist:**

Born in Michigan, and having lived primarily in Missouri, Sage Dawson received a BFA in Painting and Printmaking from Missouri State University in 2005. Using mixed media, Sage draws from experiences in her individual history, the landscape, and architectural research in Israel (2004) and India (2008).

Sage received an MFA in Printmaking with a minor in Museum Studies from the University of New Mexico in 2009. There, both in collaboration with the Tamarind Institute and alone, she worked beyond the constraints of the traditional press bed size using multiple panels to create large-scale prints. She has exhibited nationally and internationally, and was recently awarded a solo exhibition at Woman Made Gallery in Chicago. Sage's current work draws upon the history of cartographic rendering: mapping a metaphysical landscape in order to investigate constructed systems of belief, sublimity, and the distinct identities of spaces. For more information visit [www.sagedawson.com](http://www.sagedawson.com).

**EXHIBITIONS AT THE GALLERY THROUGH JULY 23, 2009:**

Group Show: **Interactive** juried by Karen Hanmer

Solo Show: **Maps & Metaphysics** by Sage Dawson

Solo Show: **Interrelated** by Kong Xin Shi

Artisan Gallery: **Physicality** juried by Margaret Denny

**Woman Made Gallery**

**685 N. Milwaukee Ave.**

**Chicago, IL 60642**

**Website:** [www.womanmade.org](http://www.womanmade.org)

**Gallery Hours: Wed-Fri noon-7 p.m. / Sat-Sun noon-4 p.m. / Admission: Free**

Woman Made Gallery is supported in part by grants from the Illinois Arts Council, a state agency; a CityArts Program II grant from the City of Chicago, Department of Cultural Affairs; the Arts Work Fund for Organizational Development, a donor advised fund of the Chicago Community Foundation; the Gaylord and Dorothy Donnelley Foundation; the Efrogmson Fund, a CICF Fund; a major anonymous donor; and the generosity of its members and contributors.

###