

August 28, 2011

FOR IMMEDIATE RELEASE

Contact Information

Beate Minkovski, Executive Director

Phone: (312) 738-0400 / Email: gallery@womanmade.org

womanMADE



GALLERY

War Stories

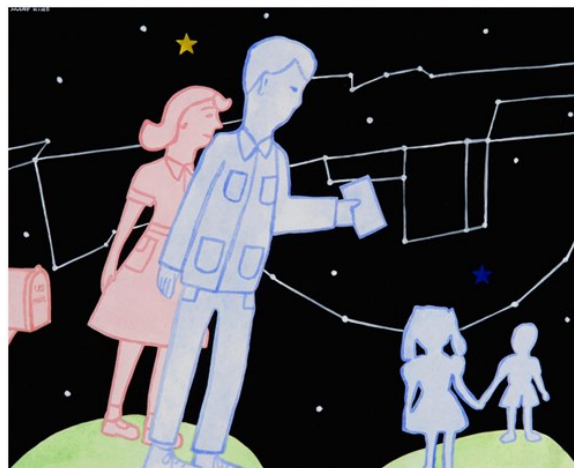
Mary King

Sept. 9 – Oct. 27, 2011 / Opening Reception: Friday, Sept. 9, 6–9 p.m.

CHICAGO — Woman Made Gallery is proud to present “War Stories” with mixed media works by Chicago artist Mary King.

For this solo exhibition, the artist conducted interviews with war veterans in preparation for creating her work, which depicts the emotional part of war memories of old people in Nebraska and young people in Chicago, with emphasis on World Wars I and II and the Iraq War.

Mary King is a professional artist and educator with a BFA from the University of Chicago and an MFA from Western Michigan University. She juried WMG’s concurrent group exhibition, ‘The Project’. She has had four solo shows at Denise Bibro Fine Arts in New York, two of which were reviewed by The New York Times. She is currently represented by Sherry Washington Gallery in Detroit. Her work is in collections, including Western Michigan University and Blue Cross/Blue Shield of Michigan. She has been selected for an artist residency in 2012 at the Vermont Studio Center. For more information see www.marykingart.com.



The opening reception for ‘War Stories’ along with the concurrent group exhibition ‘The Project’, and solo exhibition by Maria Gaspar is on Friday, Sept. 9th from 6 to 9 p.m.

Woman Made Gallery

685 N. Milwaukee Ave.

Chicago, IL 60642

Website: www.womanmade.org

Gallery Hours: Wed–Fri noon–7p.m. / Sat–Sun noon–4p.m. / Admission: Free

Woman Made Gallery is supported in part by grants from the Illinois Arts Council, a state agency; a CityArts Program II grant from the City of Chicago, Department of Cultural Affairs; the Arts Work Fund for Organizational Development, a donor-advised fund of the Chicago Community Trust; the Gaylord and Dorothy Donnelley Foundation; The Efromson Family Fund, a CICF Fund; a major anonymous donor; and the generosity of its members and contributors.

###